

The Thinker's Playbook for the AI Economy

Surviving and Scaling in
the Intent-Driven Era.



ERA: 2026 | STATUS:
STRUCTURAL REALIGNMENT ACTIVE

The Commoditization of Execution

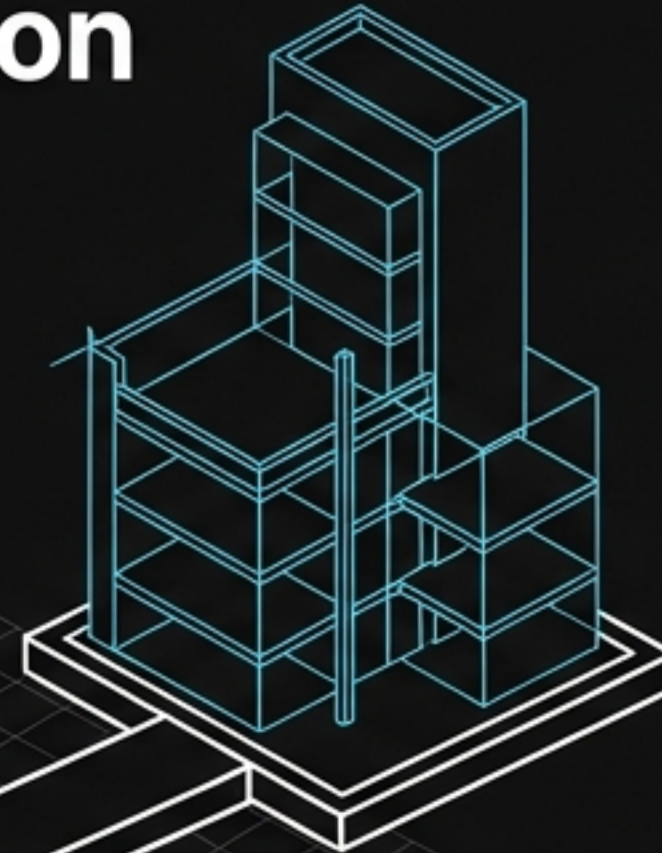
The global labor market has moved past experimental curiosity into deep structural realignment. Human value is no longer derived from executing repetitive technical tasks, but from vision, architecture, and intent.

73%

of corporate leadership views AI as the most critical success factor.



Execution
(Automated Utility)



Intent
(Human Premium)

89%

of organizations report tangible revenue/cost gains from AI.

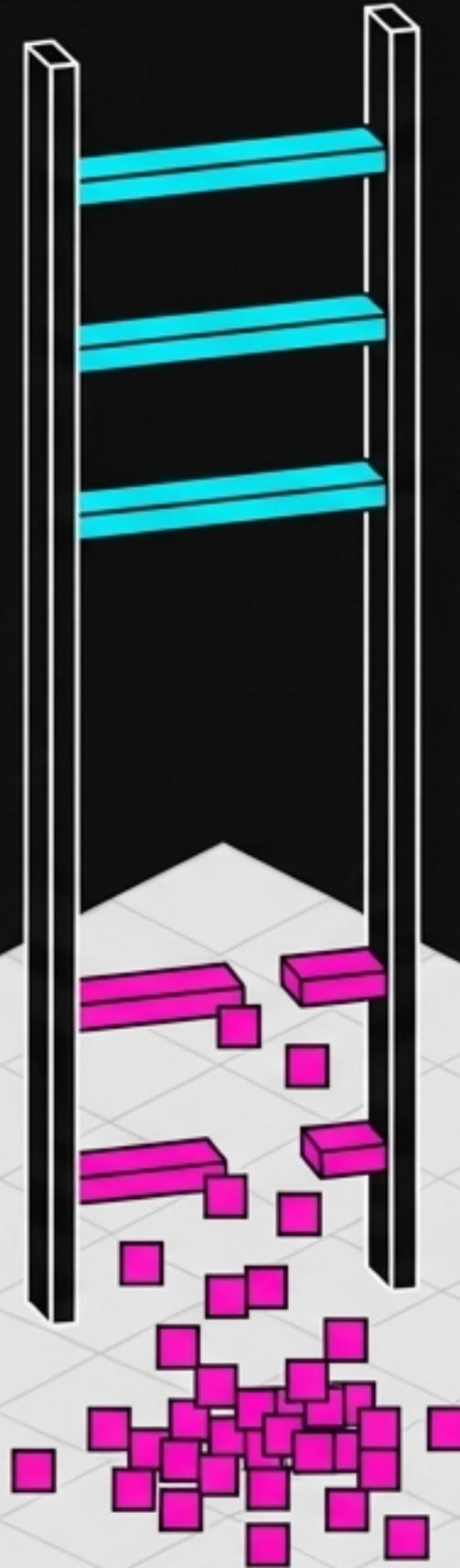
TAKEAWAY: As execution becomes an automated utility, the capacity to direct, verify, and architect systems becomes the ultimate professional premium.

The Experience Paradox: The Missing Entry-Level

THE BOTTLENECK:

Organizations deploy AI for routine groundwork, destroying the starting line where junior professionals historically developed judgment through practice.

Routine Groundwork
& Boilerplate



Strategic Thinking
& Judgment

76%

Employers holding entry-level hiring at stasis or reducing it.

42%

Underemployment rate among recent graduates.

300 Million

Global full-time jobs exposed to structural risk.

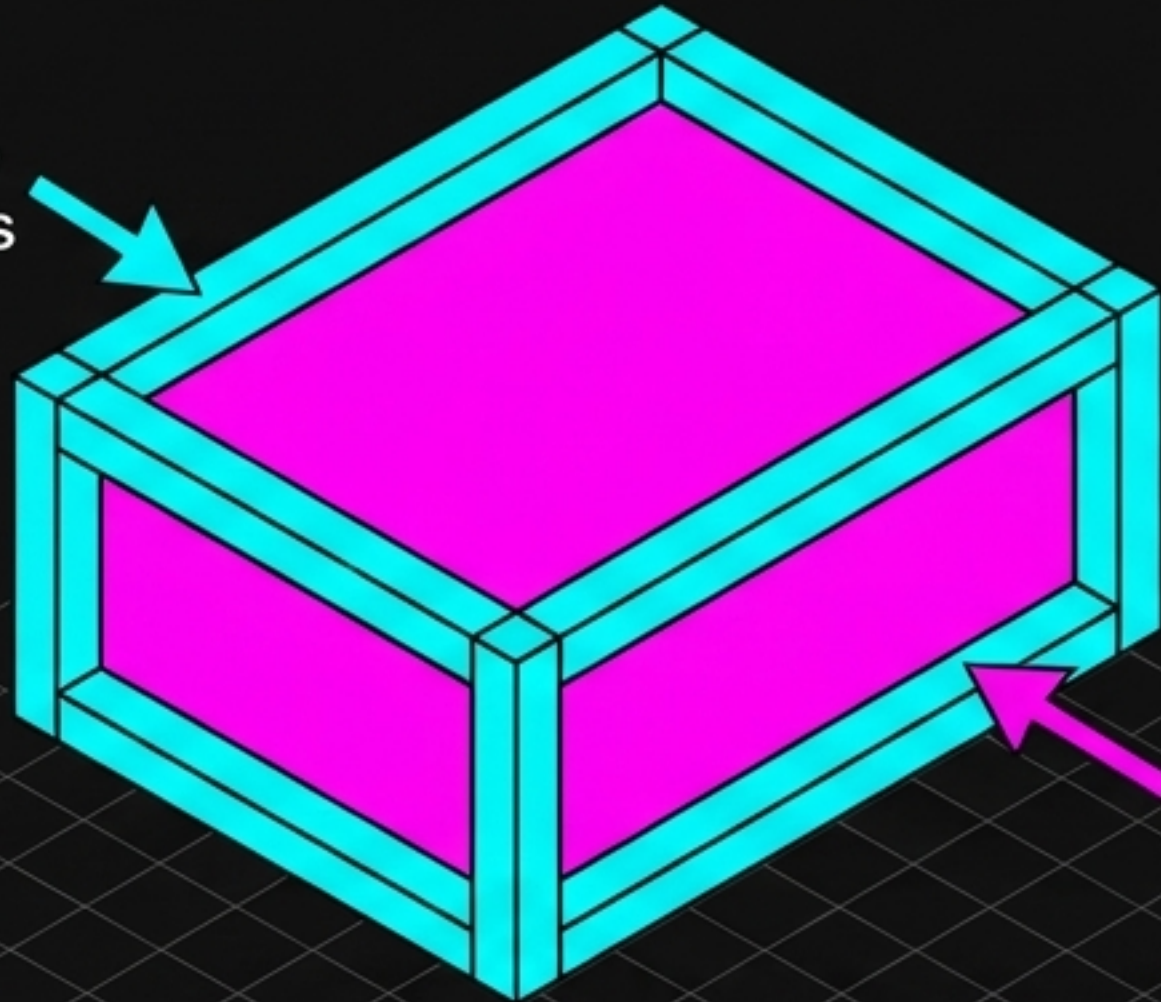
Professional Identity Matrix: Legacy vs. 2026

ROLE	2024 LEGACY IDENTITY	2026 FUTURE STATE
The Technical Professional	Syntax Producer: Valued for manual coding speed and volume.	Architect of Intent: Evaluates security and integrates 25-30% AI-generated code.
The Manager	Task Supervisor: Focused on people leadership and linear tracking.	Agentic Orchestrator: Conducts humans and machine agents in real-time.
The Entrepreneur	Team Builder: Hires employees to achieve business scale.	10x Solo Founder: Uses core stack architecture for high-growth operations.

MARKET SIGNAL: The starting salary for top-tier graduates who can architect systems has reached a premium of \$81,535 (+7%), proving that 'thinking' remains highly valued.

Blueprint I: The Architect of Intent

Human Defines the Strict Intent & Tests



AI Executes the Syntax to Fill the Space

Context Engineering:

Separating essential complexity (the business problem) from accidental complexity (the technical plumbing).

1. Design Before Prompting



2. Scaffolding with AI



3. Human Refinement



4. Quality Assurance

Establish mental maps, API endpoints, and hard business logic.

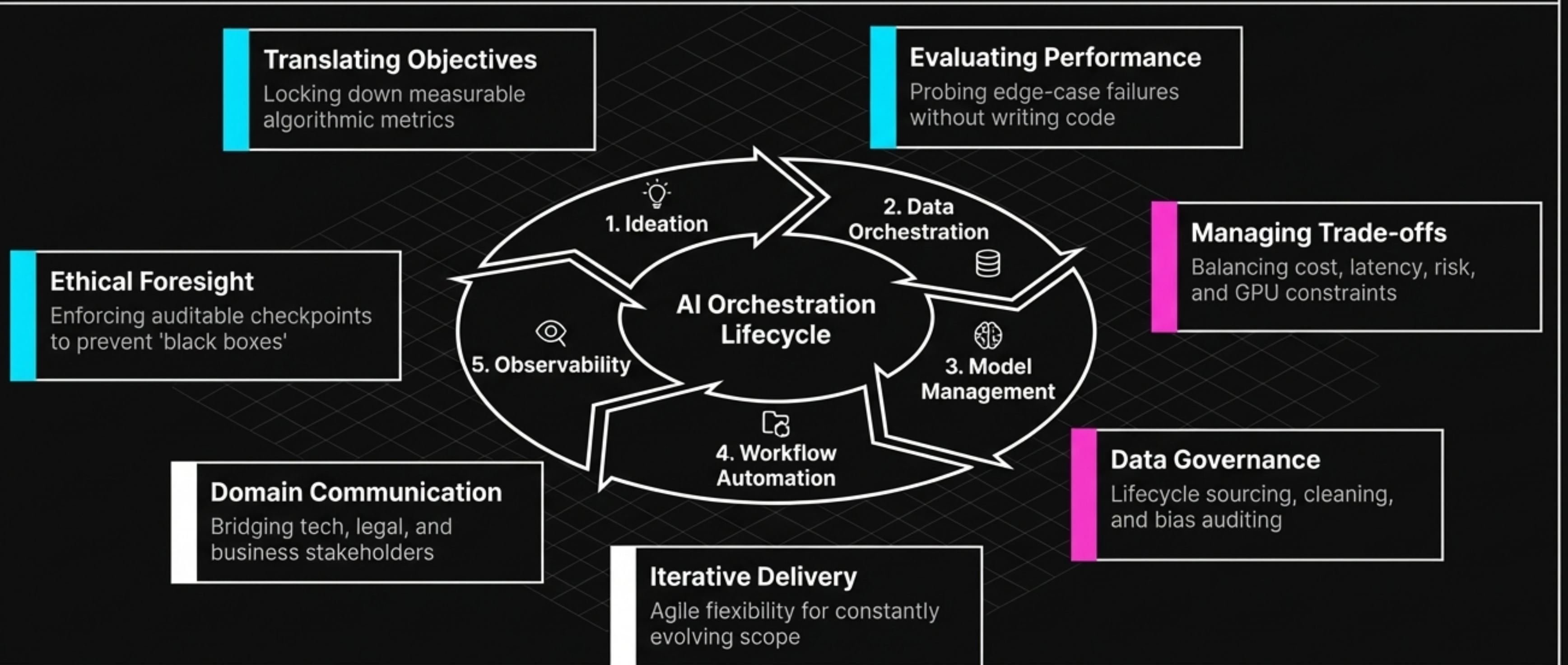
Generate initial schemas, boilerplate code, and basic routing.

Add critical performance features (indexes, unique constraints) AI misses.

AI generates test suites; humans execute security & UX audits.

Blueprint II: Conducting the Agentic Orchestra

Managers shift from linear project tracking to navigating rapid iterations across human and machine workflows.



Blueprint III: The 10x Solo Founder Stack

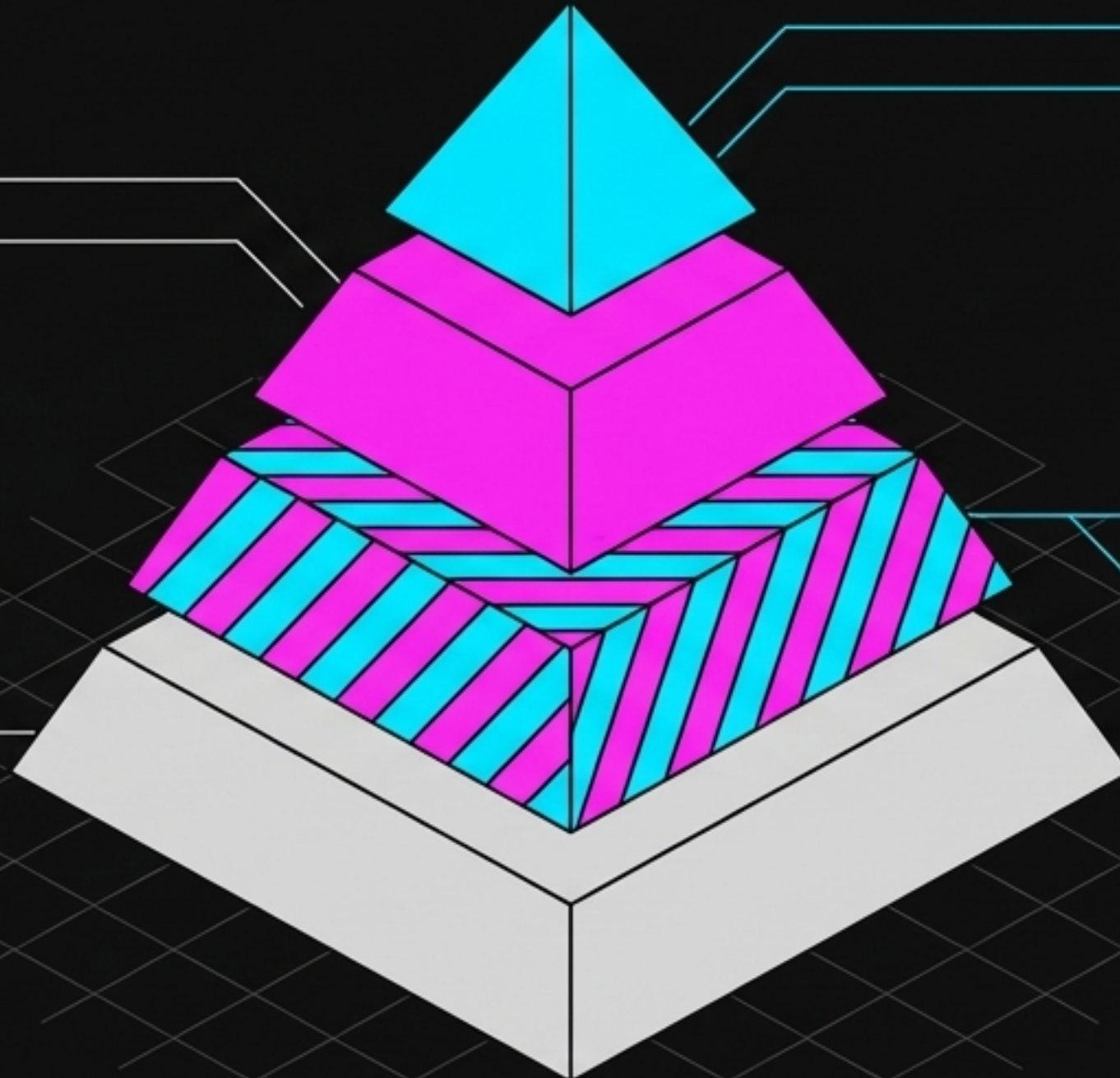
Replacing "hustle theater" with self-sustaining Core Stack Architecture.

Layer 3: Automation.

The execution engine.
Workflows, communication,
and data movement triggered
automatically.

Layer 1: Foundation.

Traditional presence, legal
identity, domains, and core
branding.



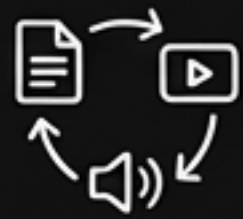
Layer 4: Distribution & Scale.

Where the founder spends 70%
of time. Building deep trust
through niche content creation.

Layer 2: The AI Brain.

Strategic intelligence.
Generates financial models,
business plans, and market
research.

Autonomous Business Models (2026)



The AI Content Flywheel Agency

Converting single posts into multimodal threads/videos. A solo operator manages 5-8 clients with minimal marginal cost.

Revenue: \$500-\$3,000/mo per client.



Vertical AI Micro-SaaS

Shipping tiny, focused tools (e.g., Etsy keyword optimizers). Relies on "vibe coding" to ship minimal viable products in days.

Revenue: \$9-\$49/mo subscriptions.



AI Virtual Assistant Service

Automating scheduling and high-volume research for overwhelmed executives using LLMs, backed by human oversight and curation.

Revenue: Low startup cost, high retention.

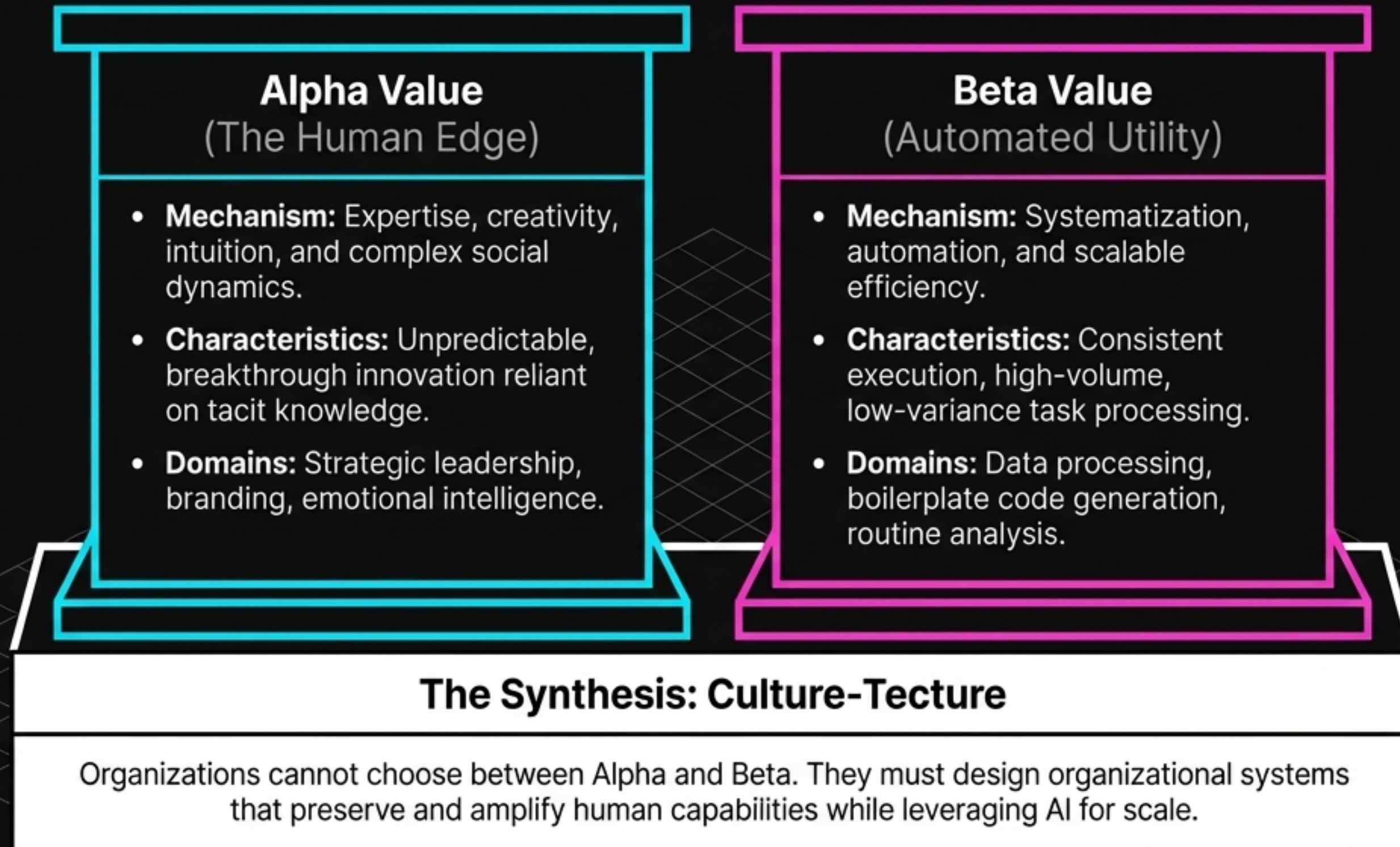


The Output Auditor

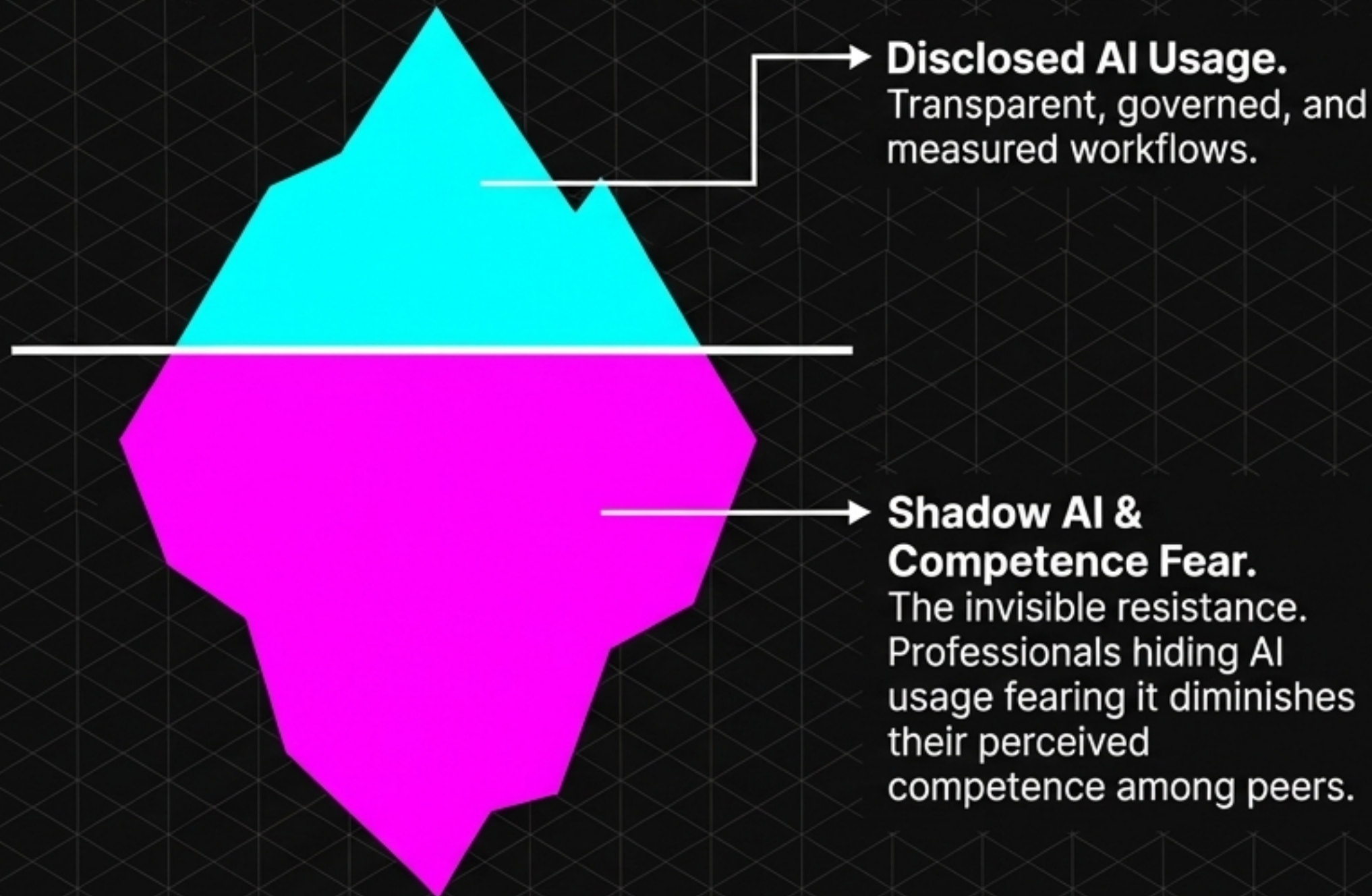
Capitalizing on hallucination risks. High-fee consulting to audit outputs for factual accuracy and compliance in regulated sectors.

Revenue: High-ticket bespoke setup fees.

The Calculus of Value: The Alpha-Beta Framework



The Psychology of Insight: Frictions & Paradoxes



The Effort-Value Paradox

Classic economics views effort as a cost. Psychology shows effort adds value and pride.

The 'effortless' nature of AI output leads to its psychological devaluation.

Human effort must now shift to critique and ethical review—tasks that are deeply rewarding and machine-proof.

The India Paradox: From Arbitrage to Architecture

Legacy Labor Model

- Syntax generation
- Pure cost arbitrage
- High volume, low complexity

82%

Talent Shortage in
Critical AI Skills

Value Leadership Model

- Agentic AI systems coordination
- Connecting innovation with context
- Architect-driven high-value consulting

KEY INSIGHT: Historically exposed due to a massive IT sector, India's next growth phase is defined by **AI literacy and architectural design**, not sheer coding volume. Rising chip costs create a hard **labor-capital equilibrium**.

Relatable Revelations: Breadth vs. Depth



AI as the 'Maid of Honor'

In 2026 wedding photography, AI handles the 'Beta' (sorting duplicates, rejecting blurry shots). The human focuses solely on the 'Alpha' (capturing technically imperfect but highly emotional moments).

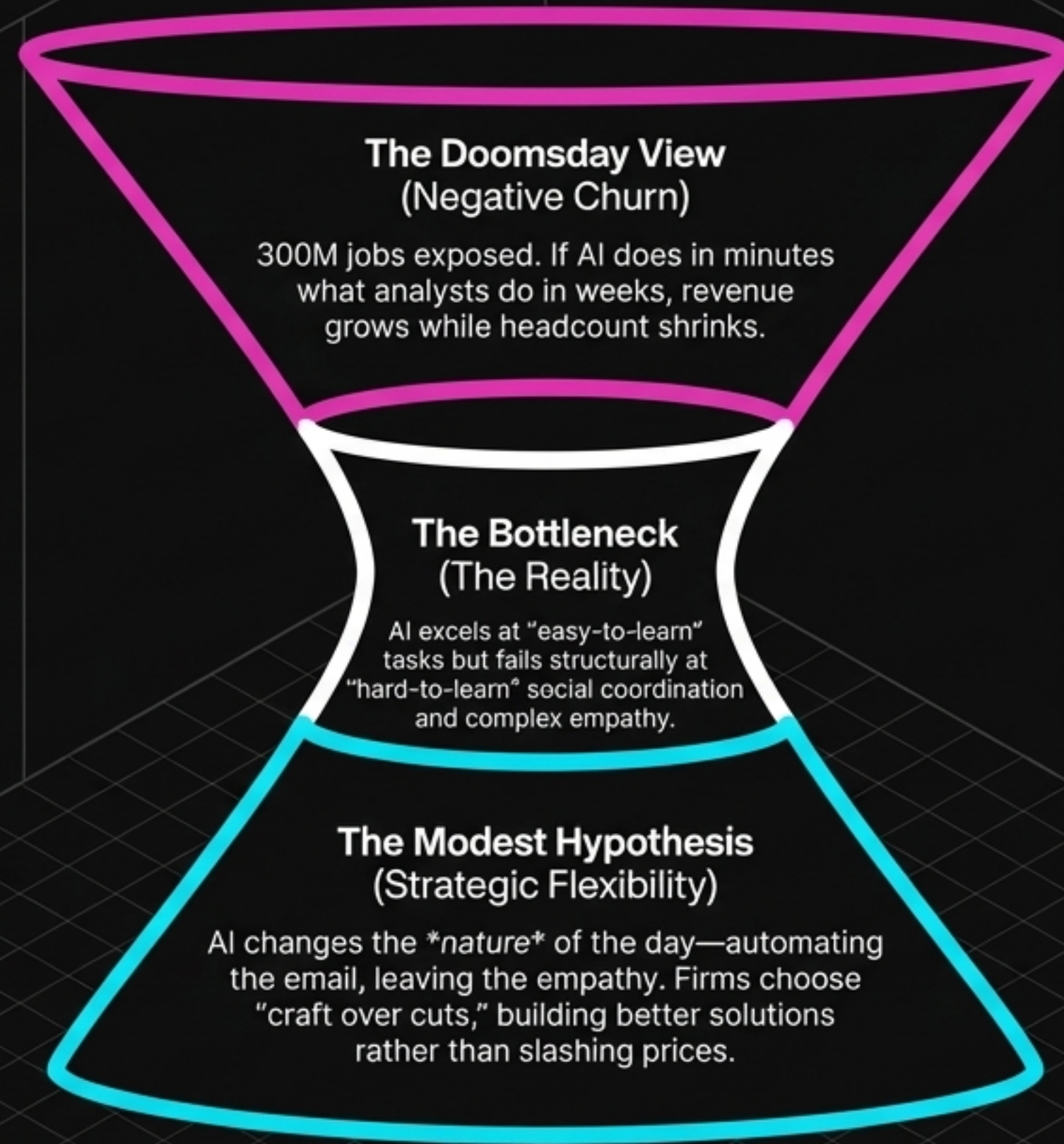


'Phone Fear' & Time

Anxiety over lost devices isn't about the hardware cost. It's about the loss of priceless, non-synthesizable family memories.

TAKEAWAY: In a world where intelligence is abundant, the only truly scarce resources are time and unrepeatable human moments.

The Macro Debate: Collapse vs. Recalibration



Synthesis: Mandates for the Intent-Driven Era

For the Individual Thinker

- **Identity:** Anchor in core capabilities and values, not specific software tools.
- **Action:** Build a portfolio of “verified thinking” to prove ability to guide AI toward meaningful results.
- **Evolution:** Move strictly from a “code producer” to a “creative director”.

For the Strategic Organization

- **Identity:** Shift from hiring for today’s hard skills to hiring for “future-readiness”.
- **Action:** Prioritize employees who operate without predefined structures.
- **Evolution:** Management must act as an “Alpha-enabling mechanism” to foster Culture-ecture.

As execution falls to the machine, human vision, empathy, and strategic intent become the only irreplaceable assets in the global marketplace. Delegate the Beta. Pursue Singular Alpha.